

# Assembly

Unpack the lift and check to ensure all contents are included. Contact your nearest Princess Auto location immediately if there are any damaged or missing parts.

## Contents:

- Main assembly
- Sliding plate
- Ramp
- Vice
- Lift foot pedal
- Release foot pedal
- Locking bar
- Bolts, washers, nuts, retaining clips

1. Place the sliding plate (36) on the platform (35) to cover the rear wheel opening.
2. Attach ramp (37) to end of platform using washers (23) and retaining clips (24).
3. Fit the front wheel vice assembly (34) to the front of the platform using bolts (33), washers (23) and nuts (30).
4. Fit the stop plate (32) using bolts (33), washers (23) and nuts (30).
5. Fit the lift foot pedal (11) to the pump piston shaft (9) and fit the release foot pedal (10) to the release valve shaft (5).

## Before First Use

1. Leave the pump for one hour to allow the oil to settle before purging the system. **Note:** Failure to allow sufficient time for the oil to settle could result in air remaining in the oil. In this event, the pump will not purge completely the first time and a second purge will be required.
2. Purge the hydraulic circuit to eliminate any air in the system by fully pressing the release foot pedal (10) and pumping the lift foot pedal (11) 15 to 20 times.
3. Test the lift, unladen, by raising it to full height and then lowering it. Depress release foot pedal (10) slowly to control the rate of descent.

# Operating Instructions

**Warning!** Ensure that you read, understand and apply the safety instructions and warnings before use. Do NOT attempt to overload the lift.

1. Position the lift in a suitable area, checking that the surface on which the lift will stand is solid and flat.
2. Turn the adjusting screw (18) down to raise the castors off the ground to prevent the lift from moving.
3. Wheel the motorcycle up the ramp and onto the platform. **Note:** There is a choice of mounting holes for the vice to cater for various sizes of motorcycles.
4. Clamp the front wheel in vice to prevent any movement of the motorcycle.
5. Strap the motorcycle securely into the platform.
6. Raise the lift by pumping the foot pedal (11).
7. When the platform has been raised to the working height, pass the locking bar (22) through the holes in the front lifting arm (38) so that the lift cannot be inadvertently lowered.
8. When work is done, check under the lift to ensure that there are no obstructions and that it is safe to lower the unit. Remove the locking bar and then SLOWLY press the release foot pedal to gently lower the lift.

**Note:** The speed of lowering is controlled by the release valve. The more the valve is opened, the more rapidly the lift descends. Ensure the descent is slow and controlled.

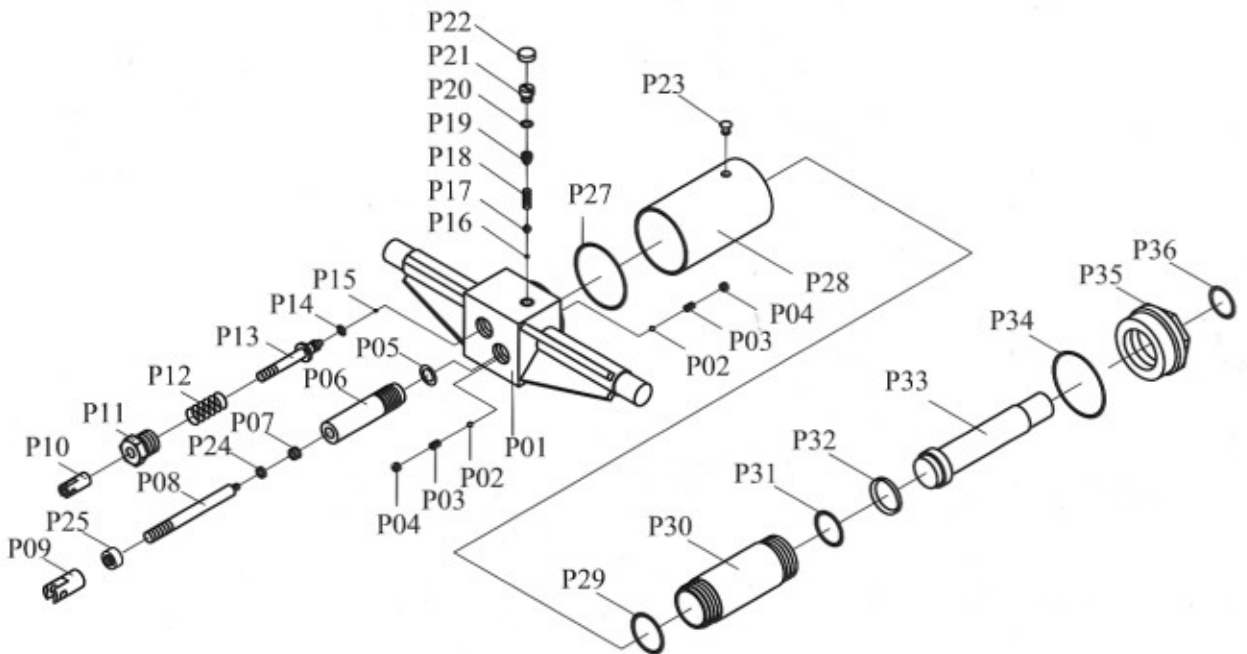
**Note:** The speed of lowering can also be adjusted by tightening or loosening the screw (Part no. P11).

9. When the lift is fully lowered, unstrap the motorcycle, open the vice jaws, and remove the cycle from the lift.

# Maintenance

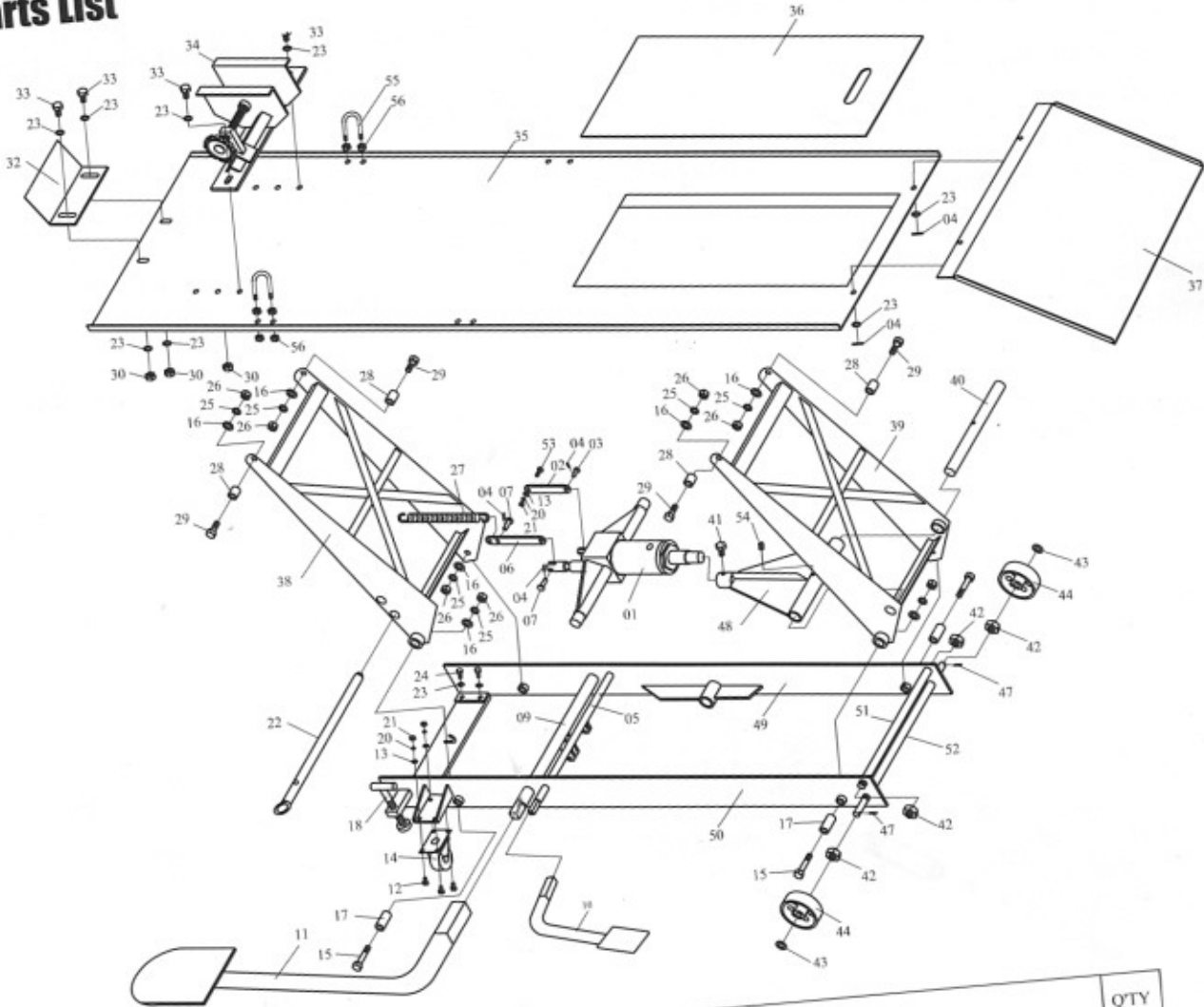
1. When not in use, the lift must be stowed in the lowest position in a dry location to minimize ram and piston corrosion.
2. Keep the lift clean and wipe off any oil or grease. Lubricate all moving parts.
3. Periodically check the ram and piston for signs of corrosion. Clean exposed areas with a clean oiled cloth.
4. Before each use check all parts. If any part of the lift is damaged or suspect, remove the lift from service and take necessary action to repair.
5. Check the hydraulic oil level. If it is not adequate, remove the filler plug (P24) on the pump and add hydraulic oil as necessary. Do NOT use brake fluid or any other improper fluid. Only a good quality hydraulic jack oil can be used.
6. When lift efficiency drops, purge away air from the hydraulic system as described in the Assembly section.

# Pump Parts List



PARTS NO	DESCRIPTION	QTY	PARTS NO	DESCRIPTION	QTY
P01	BASE	1	P19	SCREW	1
P02	STEEL BALL	2	P20	"O"RING	1
P03	SPRING	2	P21	SCREW	1
P04	SCREW	2	P22	SCREW PROTECTOR	1
P05	NYLON RING	1	P23	OIL FILLER PLUG	1
P06	REGULATING PLUG	1	P24	RETAINING RING	1
P07	SEALING RING	1	P25	NUT	1
P08	PUMP PISTON	1	P27	NYLON RING	1
P09	UNION NUT	1	P28	RESERVOIR	1
P10	UNION NUT	1	P29	NYLON RING	1
P11	SCREW	1	P30	CYLINDER	1
P12	SPRING	1	P31	"O"RING	1
P13	RELEASE VALVE	1	P32	NYLON RING	1
P14	"O"RING	1	P33	PISTON ROD	1
P15	STEEL BALL	1	P34	NYLON RING	1
P16	STEEL BALL	1	P35	TOP NUT	1
P17	BALL CUP	1	P36	"O"RING	1
P18	SPRING	1			

# Parts List



PARTS NO	DESCRIPTION	QTY	PARTS NO	DESCRIPTION	QTY
			28	BUSH	4
			29	BOLT M12*65	4
01	HYDRAULIC PUMP	1	30	NUT M10	4
02	LINK	2	32	BAFFLEPLATE	1
03	PIN	5	33	BOLT M10*25	4
04	COTTER PIN	1	34	WISE ASSY	1
05	RELEASE VALVE SPINDLE	1	35	PLATFORM	1
06	LINK	1	36	SLIDING PLATE	1
07	PIN	2	37	LEADING PLATE	1
09	PUMP PISTON SPINDLE	1	38	FRONT LIFTING ARM	1
10	RELEASE FOOT PEDAL	1	39	REAR LIFTING ARM	1
11	LIFT FOOT PEDAL	1	40	LIFTING ARM SPINDLE	1
12	BOLT M6*16	8	41	BOLT M8*10	1
13	WASHER 6	9	42	NUT M16	4
14	CASTER FORK ASS'Y	2	43	WASHER 13.5	2
15	BOLT M12*70	4	44	FRONT WHEEL	2
16	WASHER 12	8	47	COTTER PIN	1
17	BUSH	4	48	CONNECTION	1
18	AD JUSTING SCREWS ASS'Y	2	49	FRAME ASSY(RH)	1
20	LOCK WASHER 6	9	50	FRAME ASSY(LH)	1
21	NUT M6	1	51	LIFTING ARM TOP ROD	1
22	LOCKING BAR	9	52	FRONT SPINDLE	1
23	WASHER 10	12	53	BOLT M6*30	1
24	BOLT M10*20	4	54	SET SCREW M8*10	1
25	LOCK WASHER 12	8	55	"U" BOLT	2
26	NUT M12	8	56	NUT M8	8
27	SPRING	1			
28	BUSH	4			